

# LD-9022W



## Bigger Screen Bigger Possibility

Use it as a 2nd screen or a digital signage,  
transaction details and marketing campaign message are  
beautifully delivered!



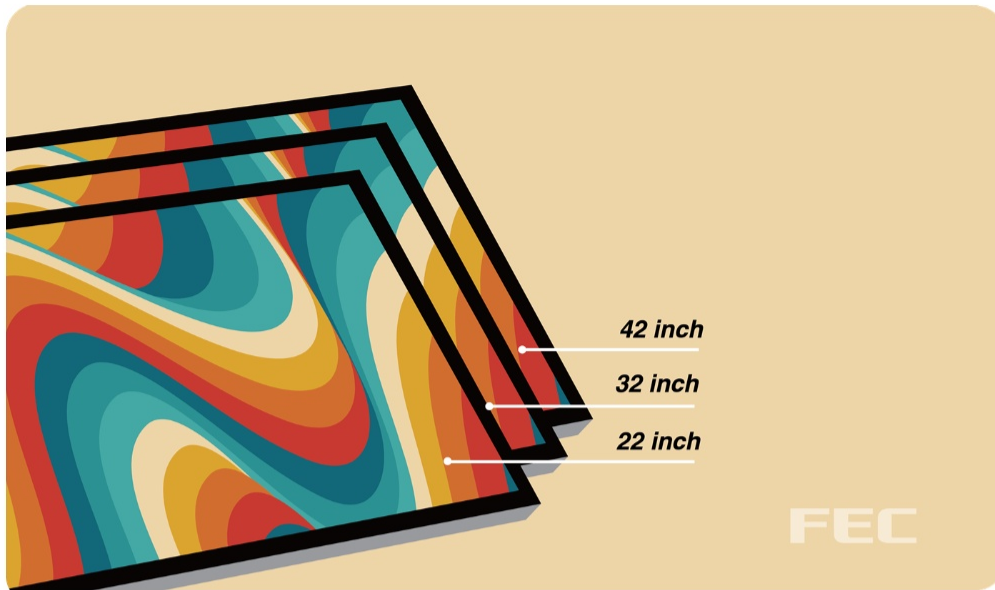
## MONITOR Series

Bigger Screen Bigger Possibility.



# 01/ Slim Border Enhances

Overall Aesthetics!

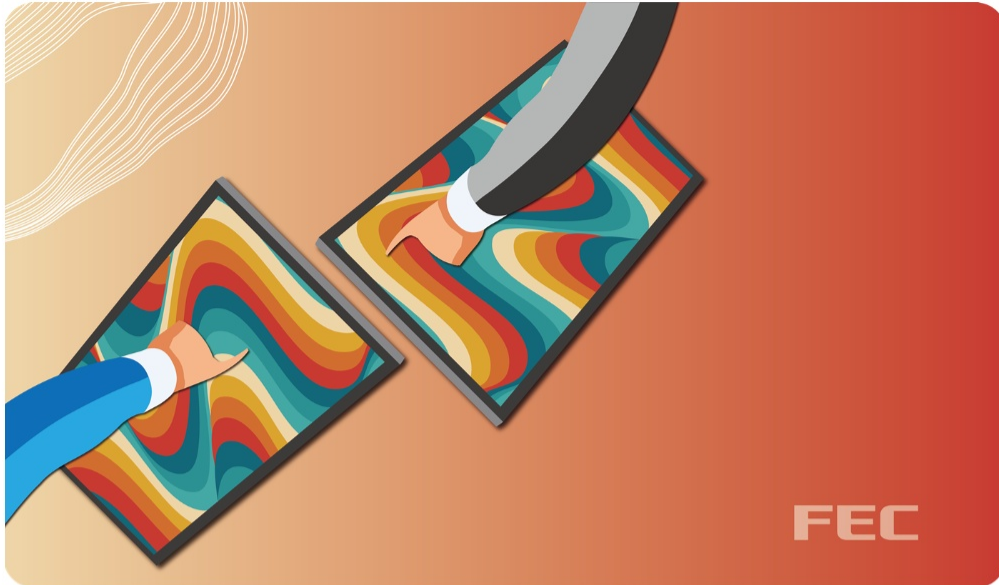


# 02/ Flexibility

Large Screen helps kitchen system run smoothly.

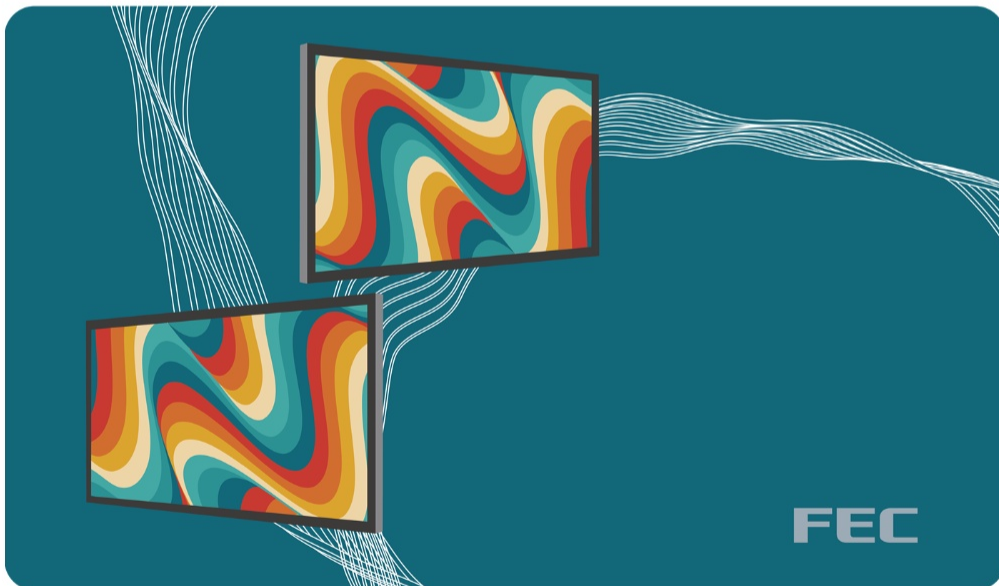


## 03/ Friendly Touch Panel



## 04/ Connectivity?

All You Needs!



## 05/ Where You Want! Where You MOUNT!

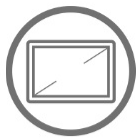


## 06/ Multiple Solutions

22", 32", or 42" The Best Choice!



# Specifications



## Display

- 21.5" TFT , 1920 x 1080



## Touch

- True-Flat PCAP
- Optional:  
Hovering Touch (Support additional 3mm max glass)  
AG Coating



## Brightness

- 250 nits



## MTBF

- 70K Hours



## Speaker

- 2 x 2W Internal Speaker



## Power

- 12V/48W External Switching  
Power Adapter



## Mounting

- Standalone
- Arm Type
- Pole Type
- VESA 100 x 100 mm



## Certification

- FCC / CE Class B



## Appearance

- Aluminum Die-Casting + Plastic
- Galaxy Grey



## Temperature

- Operation: 0 °C ~ 40 °C (32 °F ~ 104 °F)
- Storage: -20 °C ~ 60 °C (-4 °F ~ 140 °F)



## Dimensions (W x H x D)

- Product: 512.30 x 308.92 x 39.22 mm
- Carton: 662 x 210 x 440 mm



## Weight

- Display Only (Net): 3.5 Kg
- Display Only (Gross): 4.5 Kg



## Port

- AD board Version:
  - 1 x HDMI
  - 1 x VGA
  - 1 x USB 2.0 Type B
  - 1 x DC-in 12V
  - 1 x Line-in
  - 1 x RJ11



## Optional

- Optional External OSD Keypad